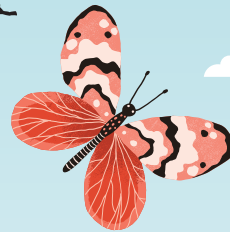


Wild About Colchester



BIG 5 SAFARI SHEET 4: WILD FOOD

HILLY FIELDS | RIVERSIDE | FOODS

Colchester's parks and green open spaces are home to a rich variety of wildlife, from oyster catchers to sneezewort. Our Ranger Team works hard to nurture these areas to make sure species can be enjoyed for many years to come.

However, the wildlife and animals they look out for are spread across a wide variety of sites, can be hard to spot and may be a rare species. We've created these Big 5 Safari sheets so you can look for them too. Simply use your mobile phone to take a photo and share your sighting on social media using **#WildAboutColchester** or by sending us an email **countryside@colchester.gov.uk**. If you email us, please include the date and a map reference to where you saw them. We've also included a few 'must see' plants or animals for each site!



Wild about Colchester is not just for children.

Challenge your ID skills and help our ranger team to locate some of the red list and harder to spot species on different reserves around Colchester.

Hilly Fields

A Green lung close to the centre of Colchester, this 80-acre site is a Local Wildlife Site and a Scheduled Ancient Monument. There is limited parking at Sussex Road and Hubert Road for main entrances via Lexden Road. Find out more at colchester.gov.uk/parks

Colchester's parks and green open spaces are home to a rich variety of wildlife, from oyster catchers to sneezewort. Our Ranger Team works hard to nurture these areas to make sure species can be enjoyed for many years to come.

Azure damselfly



Purple Hairstreak



Beewolf



Hawthorn fruit



Red campion






Image credit: P.Beard

REMEMBER TO...

- **Take care** you are responsible for the safety of yourself and your party
- **Respect COVID-19** social distancing and group gathering guidelines
- **Respect** any ancient monument and remember to put your rubbish in a bin or take it home with you
- **Recycle** this sheet if you printed it out at home.

To keep up to date with the latest Wild About Colchester activities follow us

 @EnjoyColchester  YourColchester  @BetterColchester



Riverside

This is a small open green space running alongside the river Colne out of Castle Park towards East Bay and East Street. The nearest car park is at Leisure World Colchester, the post code is CO1 1YH. Stick to the Castle Park side of the river and follow the flow east towards East Bay.

Colchester's parks and green open spaces are home to a rich variety of wildlife, from oyster catchers to sneezewort. Our Ranger Team works hard to nurture these areas to make sure species can be enjoyed for many years to come.



Otter



Heron



Cormorant



Willow emerald damselfly






Blackcap

REMEMBER TO...

- **Take care** you are responsible for the safety of yourself and your party
- **Respect COVID-19** social distancing and group gathering guidelines
- **Respect** any ancient monument and remember to put your rubbish in a bin or take it home with you
- **Recycle** this sheet if you printed it out at home.

To keep up to date with the latest Wild About Colchester activities follow us

 @EnjoyColchester  YourColchester  @BetterColchester



Foods

This one's just for fun. Explore our wonderful green spaces in Colchester for all the free food that is available

Colchester's parks and green open spaces are home to a rich variety of wildlife, from oyster catchers to sneezewort. Our Ranger Team works hard to nurture these areas to make sure species can be enjoyed for many years to come.



Chanterelle
(do not eat if not 100% sure)



Blackberries



Eryngo



Chestnuts



Sloes






Please pick responsibly and ensure there is always plenty left behind. Wildlife rely on wild foods for their survival. Never eat anything unless you are 100% sure it is safe. Some wildlife and mushrooms in the UK are deadly poisonous.



REMEMBER TO...

- **Take care** you are responsible for the safety of yourself and your party
- **Respect COVID-19** social distancing and group gathering guidelines
- **Respect** any ancient monument and remember to put your rubbish in a bin or take it home with you
- **Recycle** this sheet if you printed it out at home.

To keep up to date with the latest Wild About Colchester activities follow us

 @EnjoyColchester  YourColchester  @BetterColchester

